

## CHAPTER 2. TERRAIN, MAPS, AND DIRECTION

A scout must understand map symbols, identify elevations from contour interval lines, scale distance on a map, relate natural and man-made features shown on the map to the actual features on the ground, plot a course from one point to another, and locate his current position. To relate a map to the actual terrain and its features, a scout must be able to orient it to the ground using a compass, two points, a watch, and the sun or the stars.

### 2001. TERRAIN FEATURES

Since the infantry works and fights on the ground, terrain ashore information that scouts gather and report on is of great importance. Hills, valleys, woods, and streams are the forms and growths commonly referred to as natural land features. Artificial or man-made features include houses, bridges, and railroads. Figure 2-1 shows some important terrain features.

### 2002. THE LENSATIC COMPASS

The best method of finding direction, during both day and night, is with a compass. The lensatic and M2 are the two types of compasses issued to infantry units. Both work on the same principle.

The standard compass for general use in the Marine Corps is the pivot-mounted lensatic compass, so called because azimuths are read through a magnifying lens in the eyepiece. Figure 2-2, on page 2-2, shows the lensatic compass and its nomenclature. The metric graphic scale on the side of the compass is 1:50,000, which is the most used scale in military mapping. The graphic scale is useful in the field as a straightedge, an aid in orienting the map, and a means of reading map grid coordinates. The plastic dial is graduated in both degrees and mils. Numbers on the dial are printed in black. There are luminous markings on the bezel, floating dial, and on both ends of the sighting wire, plus a 3-degree bezel serration and clicking device that permit reading azimuths at night. The compass is carried in a nylon case that may be attached to the cartridge belt.

Magnetic compasses are affected by the presence of iron or magnetic fields. Consequently, the scout should not be within the influence of local magnetic

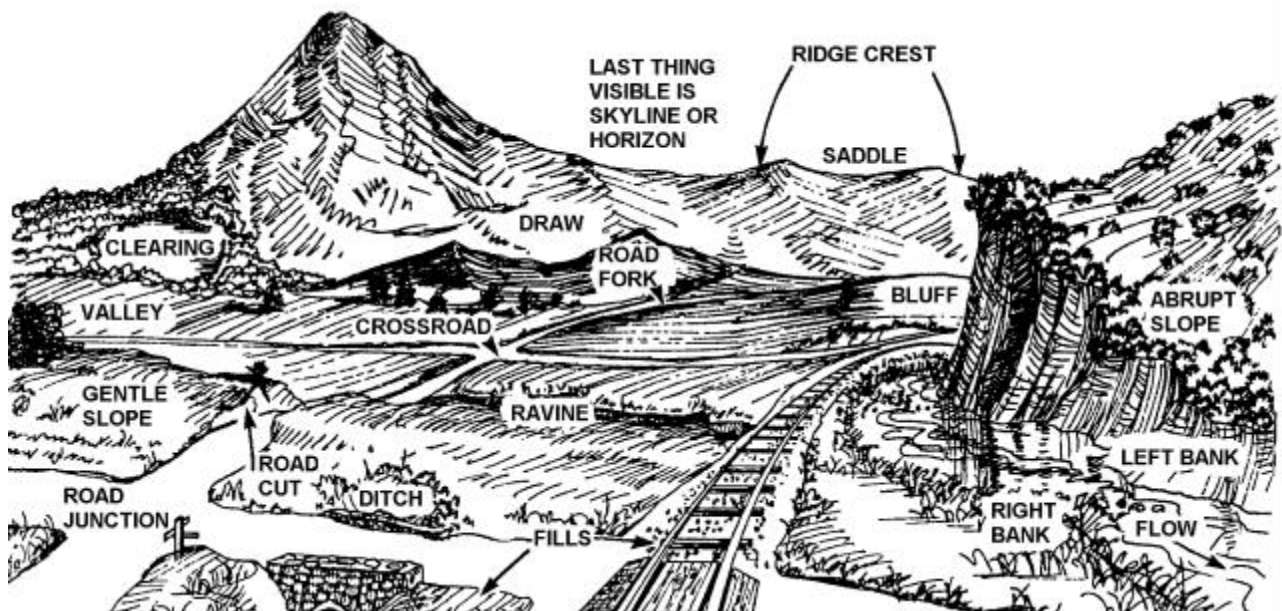


Figure 2-1. Natural and Artificial Terrain Features.

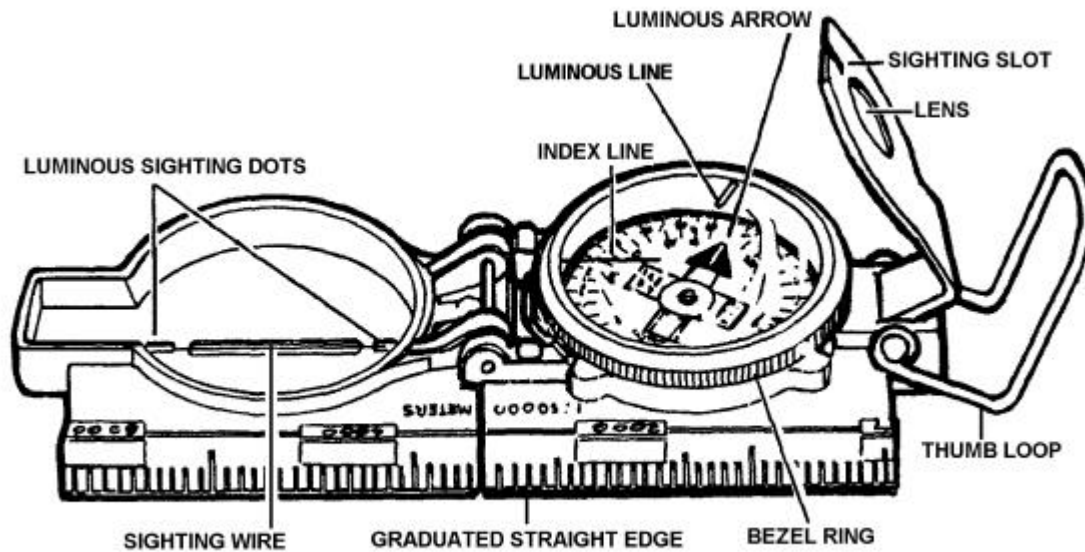


Figure 2-2. Lensatic Compass.

attraction while using a compass to determine direction. The rifle, pistol, and other metal objects must be laid aside when reading the compass. The minimum distances the scout should be from visible masses of iron and electrical fields of magnetism for the compass to provide accurate readings are provided below.

Magnetic Fields	Minimum Distances (meters)
High tension powerlines	60
Field guns	20
Vehicles (wheeled or tracked)	20
Telephone and telegraph wires	10
Barbed wire	10
Machine gun	3
Rifle, pistol	1

### Reading an Azimuth

To read an azimuth to any point, the cover of the compass is raised to an angle of 90 degrees in relation to the index face, and the eyepiece is lifted to a 45-degree angle in relation to the bezel, or so the numbers on the dial can be seen. The thumb of either hand is placed in the thumb loop, the index finger extended along the side of the compass case, and the remainder

of the hand closed. The closed hand and wrist are grasped with the other hand. The elbows are drawn in close to the body, forming a firm foundation for the compass. The eye is placed to the lens on the eyepiece. The compass is pointed at the object or point to which the azimuth is to be read. A sighting is taken through the sighting slot in the eyepiece, and the point is lined up with the sighting wire in the cover. The compass is held until the dial steadies; then the reading is taken through the lens of the eyepiece. This reading is the magnetic azimuth of the line from the observer to the point.

### Reading a Back Azimuth

A back azimuth is the direction opposite the line of sight. If the azimuth is less than 180 degrees, the back azimuth is obtained by adding 180 degrees. If the azimuth is greater than 180 degrees, the back azimuth is obtained by subtracting 180 degrees. Back azimuths are used to determine a return route or to resection to determine a current position.

### Circumventing Obstacles

When a scout is traveling on an azimuth and comes upon an obstacle—such as a contaminated area, minefield or swamp—the following steps (sometimes referred to as the *90-degree offset method*) is employed to go around or circumvent the obstacle and

resume movement along the original azimuth (see fig. 2-3). The steps are as follows:

1. Move up to the obstacle and make a full 90-degree turn to the right (or left).
2. Walk beyond the obstacle, keeping track of the distance in paces or meters.
3. Stand at the end of the obstacle, face in the original direction of march, and follow that azimuth until the obstacle has been passed.
4. Make a 90-degree turn to the left (or right) and move the distance previously measured to return to the original line of march.

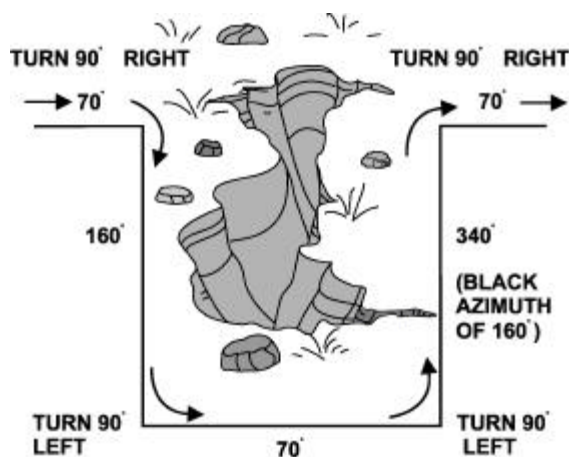


Figure 2-3. Circumventing an Obstacle.

### Following an Azimuth During the Day

The eye is placed to the lens in the eyepiece and the compass moved until the desired azimuth reading is visible beneath the fixed index. Without moving the compass, the vision is shifted from the lens through the sighting slot in the eyepiece, and a sighting is taken out beyond the sighting wire in the cover. A prominent terrain feature on this line of sight is selected, the compass closed, and the landmark approached. When the scout reaches the landmark, the procedure is repeated.

### Following an Azimuth at Night

It is necessary to prepare and set the compass before departing on a night movement because at night only the luminous parts of the compass can be seen. To prepare the compass for night use, the luminous parts

must be fully charged by sunlight or artificial light, such as a flashlight. To set a compass—

1. Move the compass so that the desired azimuth on the dial is directly under the index line on the lower glass.
2. Rotate the upper movable glass so that the luminous line is directly above the north arrow of the dial.
3. Set the compass for marching at night on the specified azimuth.

—OR—

1. Face the general direction of movement.
2. Line up the north arrow and the luminous line on the bezel with the luminous sighting dots.
3. Hold the compass still with one hand and grip the knurled bezel ring with the other hand.
4. Turn the bezel ring the prescribed number of clicks in the proper direction, remembering that each click equals 3 degrees. For example, to set an azimuth of 21 degrees, the bezel ring would be turned seven clicks to the left.
5. Turn the whole compass until the north needle lines up with the luminous line. The compass is then set on the desired azimuth. The azimuth is the line formed by the two luminous sighting dots on the inside of the cover.

To march on a preset azimuth during night movement, open the compass and move it so the north arrow is directly below the luminous line (see fig. 2-4). Move

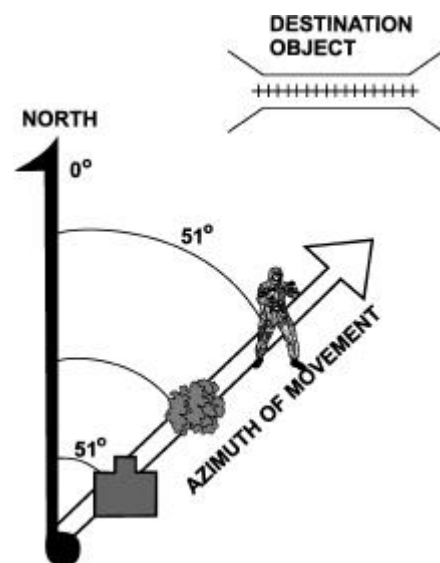


Figure 2-4. Following a Night Azimuth.

in the direction of the line formed by the two luminous sighting dots. It is necessary to refer to the compass more frequently at night than during the day. If stars are visible, find a prominent star along the azimuth of movement to use as a reference point. When the view of the sky is restricted by overcast conditions or vegetation, send a scout forward along the azimuth of movement to the limit of visibility. This scout is guided along the azimuth of movement by a stationary navigator. When the scout reaches the limit of visibility, the navigator moves to the scout's location. This process is repeated until the destination is reached.

A more rapid method for reaching the scout's destination is to equip the navigator with a compass. The navigator can set the compass as explained earlier and the scout proceeds providing security 180 degrees to the front on the specified azimuth, receiving right and left corrections from the navigator while both are on the move. The point scout must stay within visual range of the navigator. If available, a strip of white or luminous tape on the back of the point scout's helmet will assist.

## Intersection

Intersection is the location of an unknown point by successively occupying at least two, preferably three known positions and sightings on the unknown point. It is used to locate features not depicted on the map or not readily identifiable. To determine an intersection, perform the following steps (see fig. 2-5):

1. Orient the map using the compass.
2. Locate and mark your position on the map.
3. Measure the magnetic azimuth to the unknown position; then convert to grid azimuth.
4. Draw a line on the map from your position on this grid azimuth.
5. Move to a second known position from which unknown point is visible. Locate this position on the map and again orient the map using the compass. The second unknown position should be a minimum of 30 degrees offset from the first position.
6. Repeat steps 4 and 5.

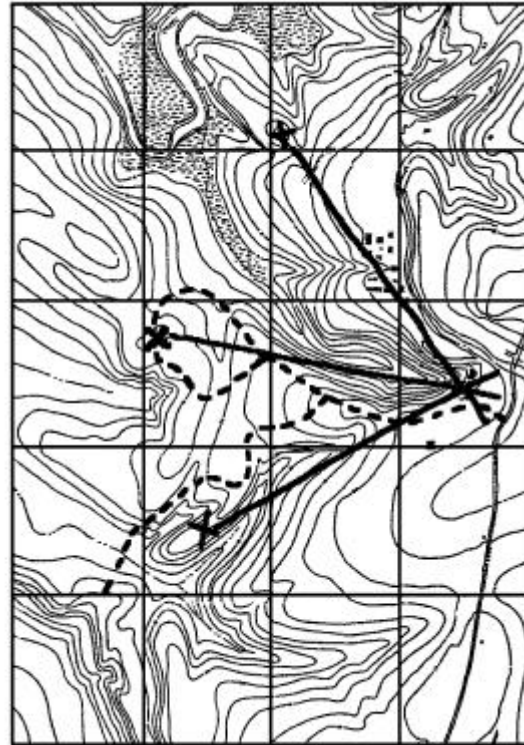


Figure 2-5. Intersection.

To check accuracy, move to a third position and repeat steps 1 through 4. Where the lines cross is the location of the unknown position. Using three lines, a triangle is sometimes formed—called the *triangle of error*—instead of an intersection. If the triangle is large, recheck your work to find the error. Do not assume that the position is at the center of the triangle.

## Resection

Resection is the location of the user's unknown position by sighting on two or three known features that are identifiable on the map. To determine a resection, perform the following steps (see fig. 2-6):

1. Orient the map using the compass.
2. Locate two or three known positions on the ground and mark them on the map.
3. Measure the magnetic azimuth to a known position then convert to grid azimuth.

4. Change the grid azimuth to a back azimuth and draw a line on the map from the known position back toward the unknown position.
5. Repeat step 3 and step 4 to determine a second known position.

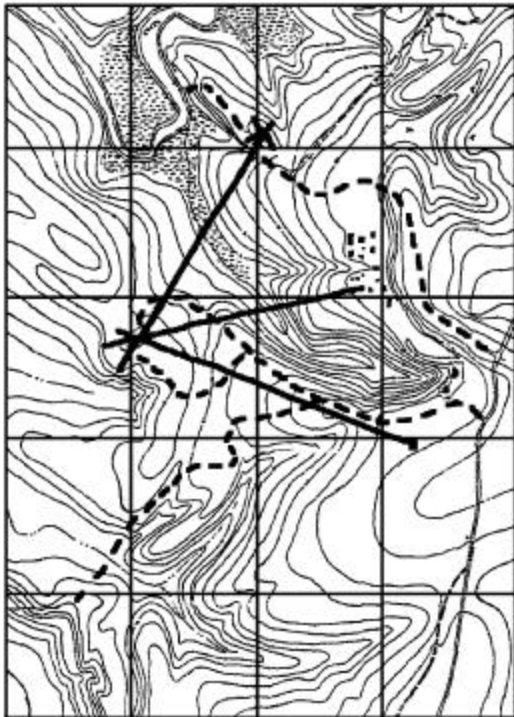


Figure 2-6. Resection.

To check accuracy, repeat the steps above for a third known position. The intersection of the lines is your location. Using three lines, a triangle of error may be formed. If the triangle is large, recheck.

### 2003. STARS, SUN, AND OTHER FEATURES

In rare cases when a scout is without a compass, the following examples are alternate means to determine direction. When using constellations to determine direction, identify your location's Temperate Zone. A Temperate Zone is the area between the tropics and the polar circles.

At night, the stars provide an excellent means of maintaining a line of march. In the North Temperate

Zone (north of the equator), the Big Dipper constellation is one key to determining direction of true north. It is made up of seven fairly bright stars in the shape of a dipper with a long curved handle (see fig. 2-7). The two stars that form the side of the cup farthest from the handle, used as pointers, are situated in the direction of a bright star that is about five times the distance between the two stars of the dipper cup. This bright star is the North Star and is directly over the North Pole. The pointers always designate the North Star, which is the direction of true north.

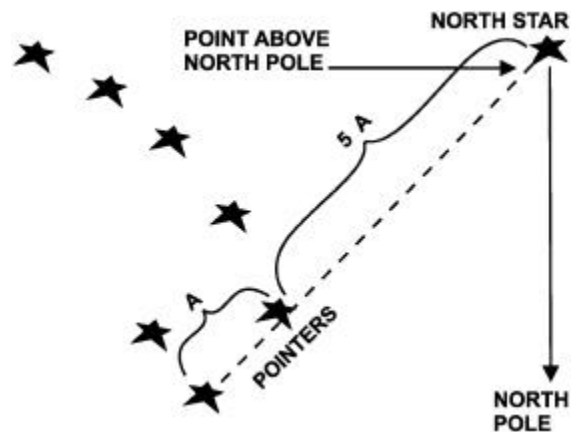


Figure 2-7. Locating the North Pole.

In the Southern Hemisphere, true south is determined in relation to the Southern Cross, a constellation composed of five stars. Two bright pointer stars in the vicinity of the Southern Cross serve as locators to help locate true south (see fig. 2-8). The outer four stars are

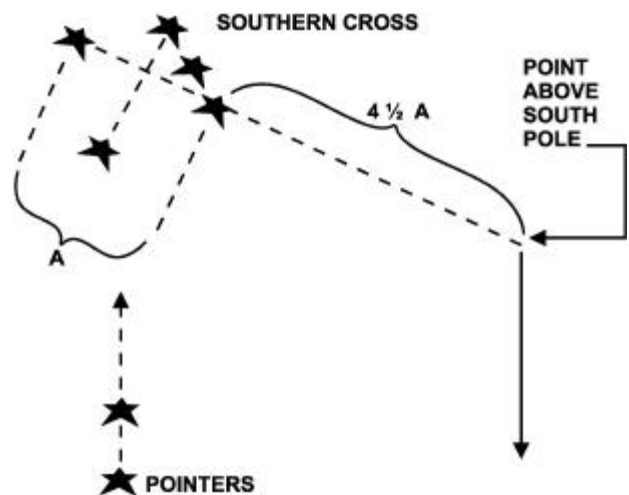
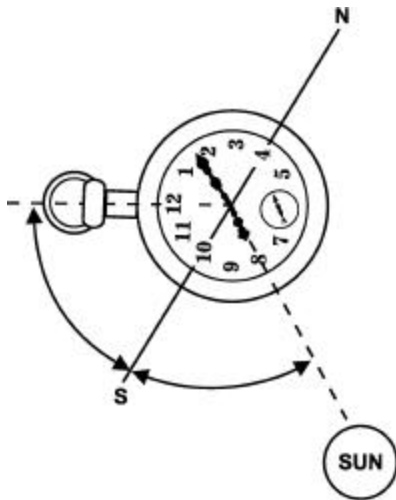


Figure 2-8. Locating the South Pole.

fairly bright and form a cross. This cross is imagined as the frame of a kite. A straight tail, four and one half times as long as the length of the kite itself, is put on the kite using finger widths for a measuring stick. The end of this tail will be close to a position directly over the South Pole. Usually, it will not be possible to see a star in the immediate vicinity, because there is no bright star visible directly above the South Pole.

During daylight hours, a watch and the sun can be used to determine direction within 8 degrees. In the North Temperate Zone, the watch is held horizontally, face up, and the hour hand pointed at the sun (see fig. 2-9). The north-south line and the direction of south can be found midway between the hour hand and the number 12, if the watch is set on standard time. If in daylight savings time, the direction of south is found midway between the hour hand and the number 1.

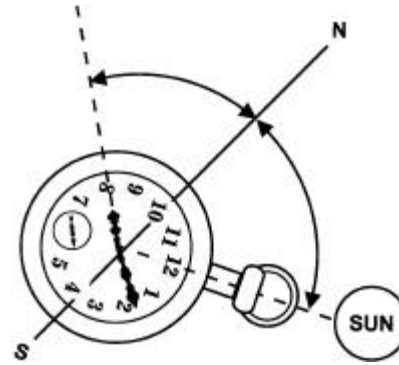


**Figure 2-9. Determining Direction by Watch and Sun (North Temperate Zone).**

In the South Temperate Zone, if the watch is set on standard time, the number 12 on the watch is pointed at the sun; if the watch is set on daylight savings time, the number 1 is pointed at the sun. North is midway between 12 (or 1) and the hour hand (see fig. 2-10).

When laying in a north-south line, if any doubt exists as to which end of the line is north, remember that the sun is in the east before noon and in the west in the afternoon.

In addition to the sun and stars, other methods a scout without a compass can use to determine direction include determining prevailing wind direction and



**Figure 2-10. Determining Direction by Watch and Sun (South Temperate Zone).**

using a mountain for orientation. By previous study of maps and photographs, a scout can keep informed of location and direction by using a distinctive edge of woods, a deep ravine or the direction of a stream's flow. A scout should constantly evaluate and memorize both the immediate terrain and general area for prominent features and landmarks.

---

## 2004. RANGE DETERMINATION

---

Range determination is the method of finding the distance between an observer and an enemy target or an object. By accurate range determination, the members of a given unit can set their sights correctly and place effective fire on enemy targets. The degree of accuracy is dependent on several factors, such as terrain relief, time available, and experience of the observer.

### Mental Estimation

A mental distance estimate is made using a known unit of measure. Distance is estimated to the nearest 100 meters by determining the number of known units of measure between the observer's position and a target. For example, a football field, which is 100 yards, can be used as a known unit of measure for determining the distance between an observer's position and a target. For longer distances, progressive estimation may be necessary. To do this, the observer determines the number of units of measure to an intermediate point and doubles the value. The observer should consider the effects in table 2-1 in estimating distances.

**Table 2-1. Effects to Consider in Mental Estimation of Distances.**

Objects Appear Nearer	Objects Appear More Distant
In bright light.	In poor light or in fog.
In clear air at high altitude.	Only a small part of the object can be seen.
The background is in contrast with the color of the object.	The background is similar in color to that of the object.
The observer is looking down from a height.	The observer is looking over a depression, most of which is visible.
The observer is looking over a depression, most of which is hidden.	The observer is kneeling or sitting, especially on a hot day, when the ground is moist.
The observer is looking down a straight feature such as a road.	
The observer is looking over water, snow, or a uniform surface such as a cultivated field or desert.	

### Estimating in Good Visibility

When visibility is good, distances can be estimated by using the appearance of tree trunks, branches, and foliage (as seen by the naked eye) in comparison with map data. Table 2-2 is a guide for wooded terrain. Table 2-3 is a guide for urban environments.

### Estimating From a Terrain Study

The Marine should always use terrain/map analysis to assist in estimating distances. When the Marine is looking in a specific direction, the estimation of distance can be enhanced by studying the terrain and comparing it with the map. Particular emphasis should be given to color contrasts of terrain features seen along the observer-target line (OTL). For example, the distance across successive ridge lines or depressions in

**Table 2-2. Estimating Distance in Wooded Terrain.**

Distance in Meters	Tree Description
1,000	Trunk and main branches are visible. Foliage appears in cluster-like shape. Daylight may be seen through the foliage.
2,000	Trunk visible, main branches distinguishable, foliage appears as smooth surface. Outline of foliage of separate trees distinguishable.
3,000	Lower half of trunk visible. Branches blend with foliage. Foliage blends with adjoining trees.
4,000	Trunk and branches blend with foliage and appears as a continuous cluster, smooth in appearance. Movement of foliage due to wind cannot be detected.
5,000 and beyond	Whole area covered by trees and appears smooth and dark.

**Table 2-3. Estimating Distance in Urban Terrain.**

Distance in Meters	Object Identified by the Unaided Eye
1,000	Lone tree trunk
1,500	Individuals and horsemen
3,000	Chimneys on rooftops
4,000	Windows in houses
4,000–5,000	Individual houses in populated area
8,000–9,000	Villages and individual houses
15,000–18,000	Large houses, towers, and steeples

the distance may be identifiable by only slight changes of color to the eye. Different colors of grass might reveal a hidden terrain feature such as a stream.